

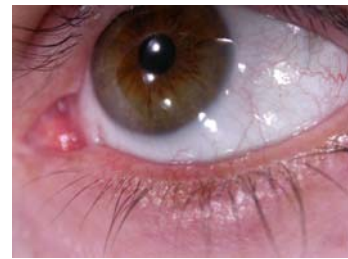


# Lacrimal & Orbital Surgery

## Frequently Asked Questions (FAQs)

### **My eyes are sore and watery, especially towards the evenings**

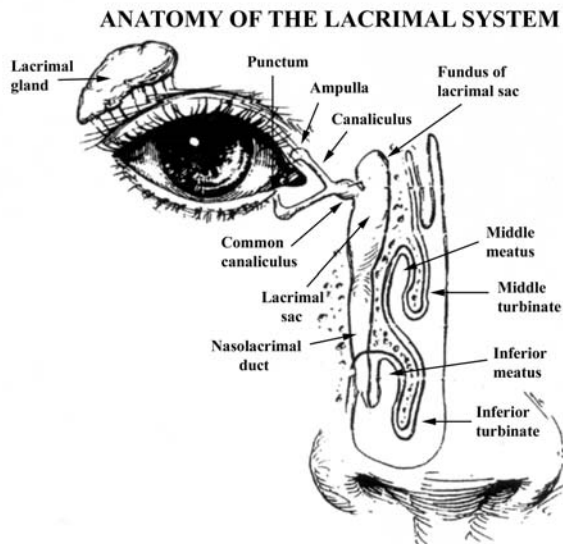
This is usually due to a condition called blepharitis. This is a chronic inflammatory condition of the eyelids. The inflammation causes irritation to the eye and excessive tear production.



Inflammation of the left lower eyelid inflammation.

### **Can I have treatment for a blocked tear duct**

There is a fine balance between tear production and the removal of tears through the naso lacrimal system (see diagram below). If the tear ducts are blocked, surgery is required to bypass the obstruction. This can be performed through the skin over the nose or entirely from within the nose.



### **My child has had a watering eye since birth**

Congenital watering of the eye is due to the naso lacrimal duct not being fully open. Most tear ducts open by the age of 1 year. If watering continues beyond this stage then probing of the tear duct is required to try to relieve the blockage.



Increased tears in the left eye.

## **I have thyroid problems and my eyes are very prominent**

Thyroid disease frequently affects the eyes and can cause a wide variety of problems eg watering, irritation, redness, bulging forwards, double vision, loss of vision. Management is complex and tailored to each patient. It may require surgery on the bony walls of the orbits, surgery on the muscles that move the eyes, and surgery on the eyelids.



Patient with thyroid associated eye disease.

## **Some patients have a tube to collect tears**

In cases where the canaliculi are damaged, a Lester Jones tube can be inserted to drain the tears from the eye into the nose. This requires particular care to make sure that it stays in the correct position and remains clean.



The glass Lester Jones Tube sits in the inner corner of the eye and drains tears from the eye into the nose.



Mr S A SADIQ DO MRCOphth FRCS FRCOphth DM  
CONSULTANT OPHTHALMIC SURGEON



### **Ahmed's career**

Ahmed qualified from the University of London in 1987, and started training in Ophthalmology in London in 1989. He was a registrar and a fellow in Nottingham, and was appointed as Consultant Ophthalmic Surgeon specialising in phacoemulsification and oculoplastics at the Manchester Royal Eye Hospital in December 1998. He has over 40 publications, more than 40 presentations, and a DM (thesis on endonasal laser DCR).

### **Ahmed's roles at the Manchester Royal Infirmary & University**

Ahmed interviews for the Medical School, and teaches medical and optometry students. He examines medical students, and for the MOptom. He is a member of the Local Negotiating Committee on behalf of the Manchester Royal Eye Hospital, and is a North West Representative of the Hospital Consultants and Specialists Association. He has raised money for the New Children's Hospital by arranging sponsored events. Ahmed has drafted a new mobile telephone use policy for the Trust which will become part of the hospital's policies.

### **Ahmed's roles outside CMMC**

Ahmed is a nominated representative of the Royal College of Ophthalmologists (RCOphth) on the General Optical Council (GOC). He is a Member of The RCOphth and a Founder Member of The British Oculoplastic Surgery Society. He is an examiner for the RCOphth as well as part of the Training The Trainers and Microsurgical Skills faculties. He has an interest in facial palsy management and is a medical adviser to the British Acoustic Neuroma association. He used to work as an Ophthalmic Medical Practitioner whilst a registrar, is a member of the Ophthalmic Qualifications Committee of the British Medical Association, and is involved with the Education Visitor Panel of the GOC.

He is active in research, a journal editor and reviewer. He is a committee member of the British International Doctors Association. He is a medical member of the Appeal Panel of The Postgraduate Medical Training and Education Board. As well as a journal reviewer, he is a reviewer for Research for Patient Benefit and Map of Medicine.

Outside medicine, Ahmed is a school governor, is involved with medical charities and community finance initiatives, and is co-chair of the Manchester Christian-Muslim Forum.

---

The Alexandra Hospital  
Mill Lane  
Cheadle  
Cheshire SK8 2PX

t +44 (0)161 495 7000/1/2/3  
f +44 (0)161 428 3666  
e a.sadiq@manchester.ac.uk  
w www.TheEyeSpecialist.co.uk